

# METIS EDS ALPHA



*by Metis*

**Metis desktop professional scanner:  
great quality, fast and easy to use!**

# METIS

# EDS ALPHA

## The V-Table design

The EDS ALPHA integrates an innovative V-Table design supported by specific software tools in order to hold the originals in any possible position/angle. The V-table has been specifically designed by Metis in order to accept and gently hold different kind of originals in an optimal manner, even antique books with limited opening angle. The V-Table allows scanning large books, maps, drawings and many types of originals even larger than the A2 format and up to 15cm of thickness. Thanks to the METIS exclusive “shape recognition” and “curvature correction” technology, which is integrated into the EDS software, the document shape is detected in real time and the acquired image is deskewed in a fraction of second delivering a perfect result.

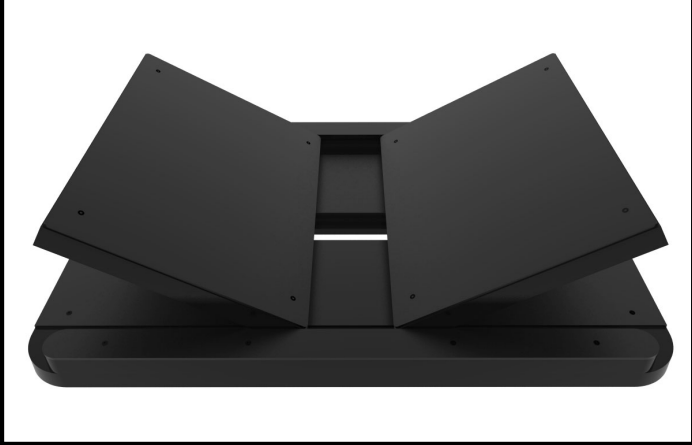
### Plates can be tilted independently



### Plates distance may also vary independently



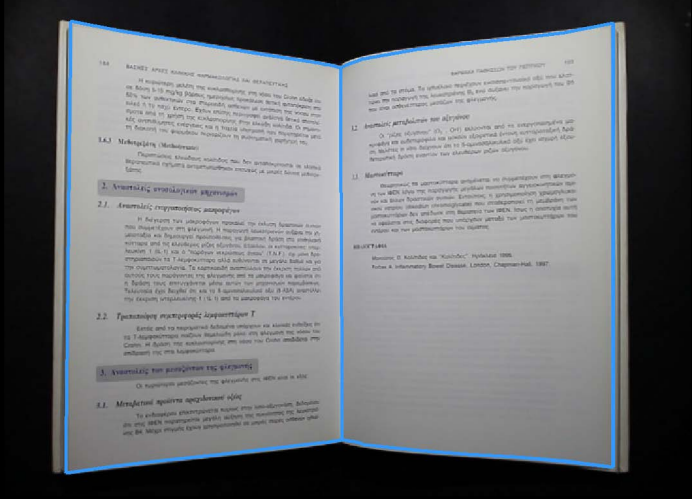
### Example 1



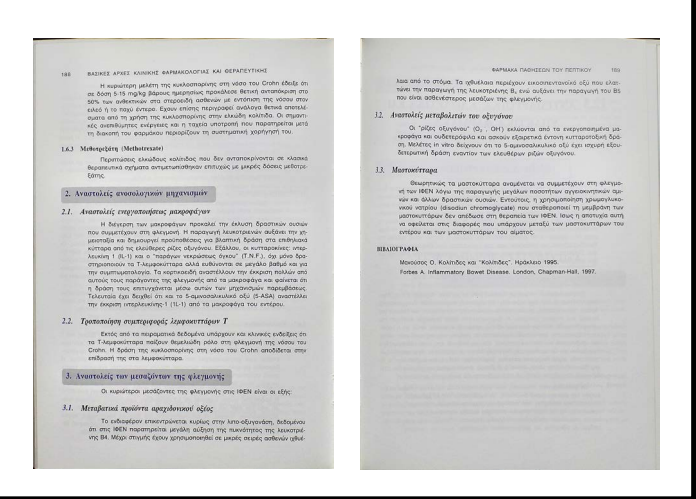
### Example 2



### Automatic shape recognition

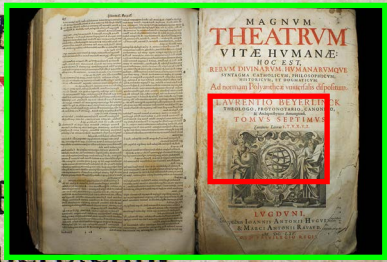
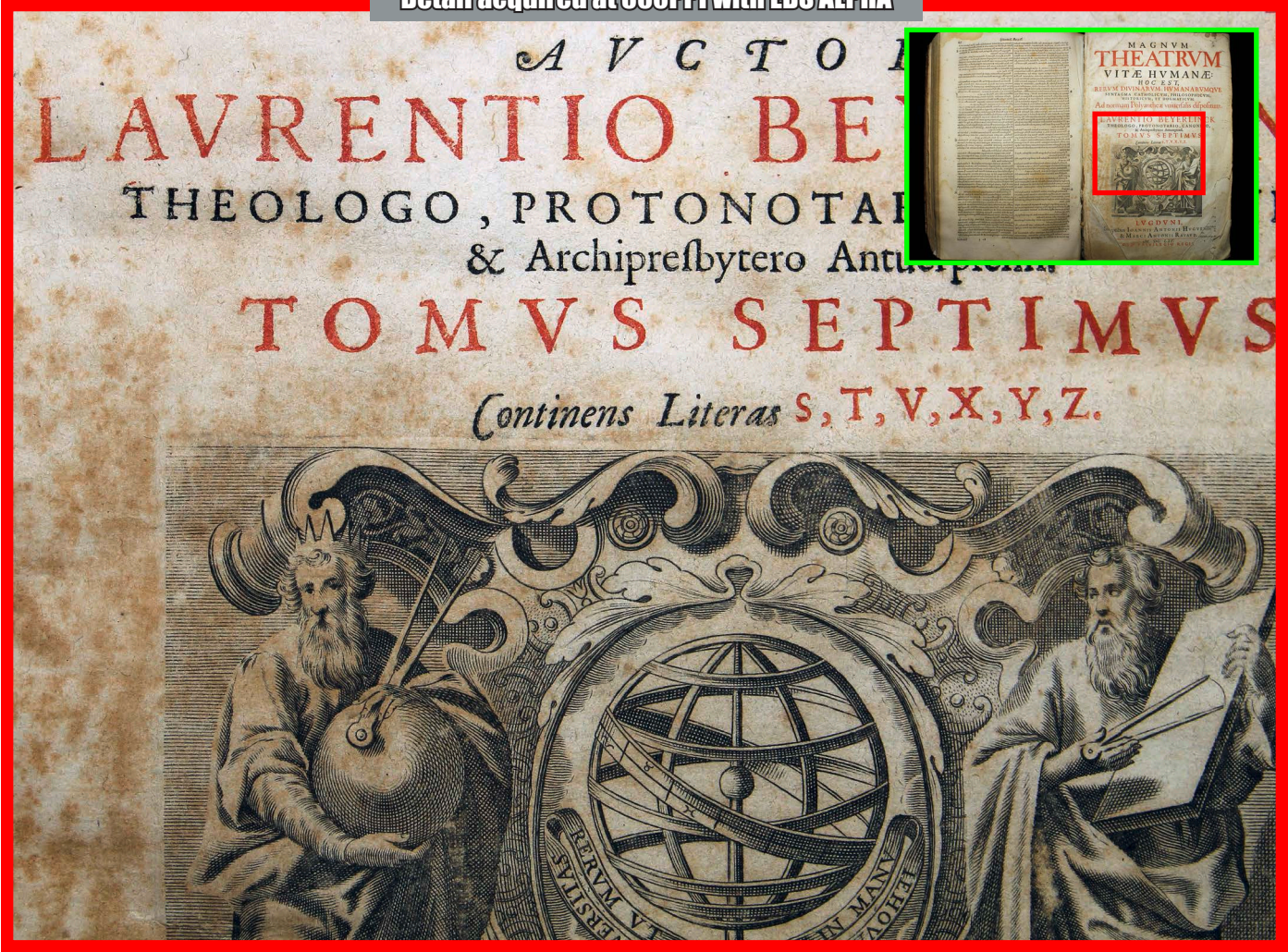


### Automatic curvature correction



# State of the art technology !

Detail acquired at 300PPI with EDS ALPHA



## PC and screen

The EDS software run under Microsoft Windows 7 on a standard PC. Optionally an LCD screen or "touch screen" or "all in one PC" can be integrated directly into the EDS system through a standard "VESA 75/100" mount.

## USB and more

The EDS ALPHA integrates two USB hubs allowing simplified connections (such as for the foot pedal, keyboard/mouse, external HD). An USB foot pedal is provided in order to command a new acquisition freeing the operator hands.

### Integrated Screen/PC ( through VESA mount )



### External USB HUB and foot pedal



The EDS ALPHA is an innovative A3/A2 desktop planetary scanner and it's the first born in the METIS EDS family (Easy Digital Scanner). The EDS is a new line of professional scanners that has been created by Metis in order to overcome the usual limitations inherent this category of products. In particular, to offer a superior image quality, ergonomics, ease of use and high productivity in a unique integrated solution. Among the main characteristics of the EDS-ALPHA there are:

- maximum scan size and resolution can vary according to user needs thanks to the integrated zoom optics; this makes possible to acquire at best originals up to the A2 format and up to 600PPI.
- unique V-table solution with automatic shape recognition, deskew and curvature correction features.
- unrivalled image quality that is far beyond any other similar solution.
- extremely rapid acquisition time (about 30 full scans per minute).
- comprehensive METIS EDS acquisition software with many powerful of useful tools and features
- extremely easy to use thanks to the EDS software user friendly "icon based" interface which also support touch screens.

## EDS ALPHA Technical Specifications

- Supported DSLR Digital Cameras (CMOS color):
  - Nikon D5300, 24 MegaPixels
  - Canon 700D / 600D / 550D, 18 MegaPixels
- Acquisition color depth : 14bit per channel (3x14bit).
- Integrated Zoom optics with motorized focus. Several optics are supported by the EDS software.
- Integrated sensors for real-time reading of exposure, color temperature and automatic focus.
- Adjustable working area : it includes the V-table which consists of two tiltable and fully independent plates which can be easily adaptable to different needs and perfectly accommodate even difficult original such as old and fragile books with limited opening.
- Maximum acquisition format higher than the A2 format (A2 =594x420mm)
- Adjustable optical resolution from about 242PPI to about 600PPI (Nikon D5300 with with standard lens) :
  - o ~254x169mm at 600 PPI (A5-A4)
  - o ~381x254mm at 400 PPI (A4-A3)
  - o ~508x339mm at 300 PPI (A2-A3)
  - o ~630x420mm at 242 PPI (A2+)
- Adjustable output resolution
- Acquisition time < 1 second; full cycle time, between one acquisition and the next one, including acquisition, processing and saving : ~ 2 seconds
- Parallel image processing and saving do not affect the acquisition time; thanks to the powerful algorithms the processing and saving time is usually extremely fast and is completed in less of one second.

## Minimal PC Specifications

- i5 Intel Processor and 8GB RAM
- 2xUSB-2.0 and 2xUSB-3.0 ports
- Windows 10 64bit
- at least 1366x768 screen resolution

## EDS Software Specifications

- Color, GrayScale or Black/White 1bit
- Automatic or manual exposure control
- Automatic or manual focus control
- Automatic or manual depth of focus control
- Automatic or manual gray balance control (light color temperature compensation)
- Software control of image exposure and contrast
- Manual and automatic Crop
- Automatic deskew and curvature correction
- Light uniformity correction Filter
- Automatic book center and shape recognition
- Automatic Book page split with used definable overlap
- User definable image orientation
- Automatic Finger recognition and removal filter
- Unsharp masking filter
- "Live Video" function allow a real time control over the scanning area; this is particularly useful in order to maximize image quality and to perfectly position the original respect to the camera
- Image review and navigator tools with a full resolution image viewer
- Add/remove/insert shot button
- Automatic image naming with user selectable rules (manual naming, programmable increments, etc.)
- Keyboard shortcuts.
- Image saving in TIFF, JPEG, JPEG2000, BMP, PNG, PDF, PDF-A, PDF Multipage, TIFF Multipage, TIFFG4 1bit.
- Automatic JOB handling with full image and shooting parameters save and reuse.